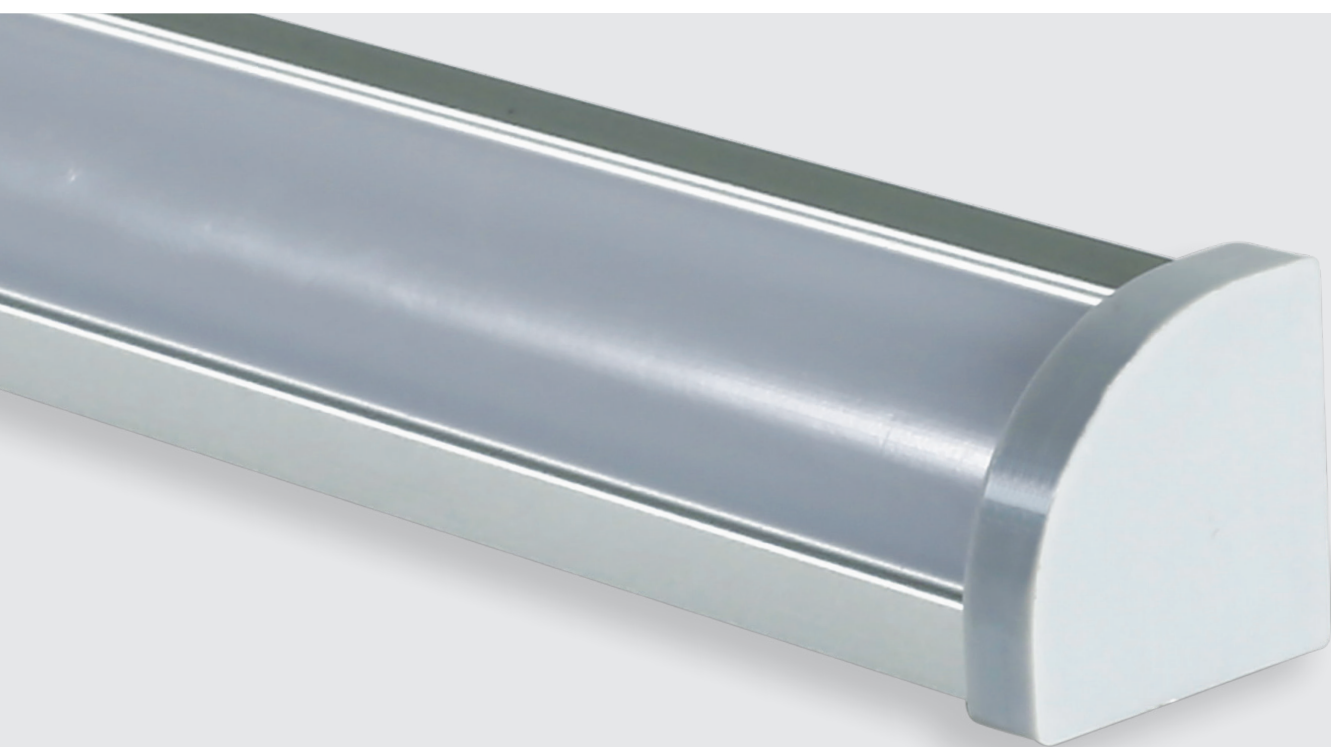
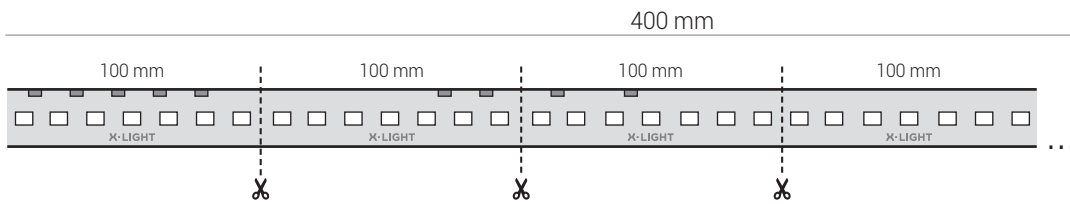




SERIE  
**ANGOLARE**



## MULTIPLI MULTIPLE

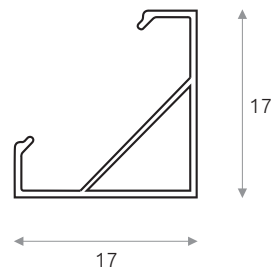


## COLORAZIONI COLORS

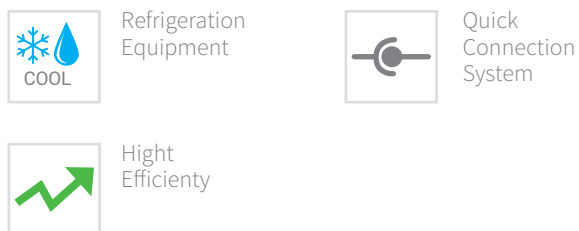


## SERIE ANGOLARE ANGULAR SERIES

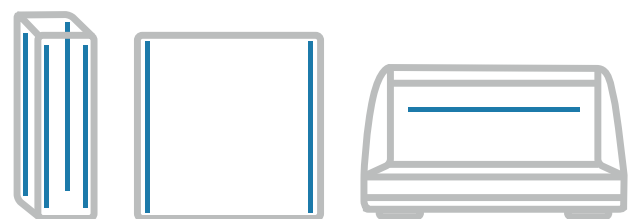
- circuito led a luce continua effetto lama di luce
- constant lighting led circuit with light blade effect



## CAMPI D'UTILIZZO FIELDS OF USE



## APPLICAZIONI APPLICATIONS



## DATI TECNICI TECHNICAL DATA

codice articolo code	descrizione description	colore color	n. moduli n. forms	Volt	flusso Lm	Power W	CRI
<a href="#">PA8408101723080A</a>	PROF. ANG. 810mm- 3000°K -17,2w-cri80-	<b>3000</b>	8	24	2390	17,2	80
<a href="#">PA8408101724080A</a>	PROF. ANG. 810mm- 4000°K -17,2w-cri80-	<b>4000</b>	8	24	2600	17,2	80
<a href="#">PA8408101726080A</a>	PROF. ANG. 810mm- 6000°K -17,2w-cri80-	<b>6000</b>	8	24	2700	17,2	80
<a href="#">PA8408101203080A</a>	PROF.ANG. 810mm- 3000°K -12w-cri80-	<b>3000</b>	8	24	1670	12	80
<a href="#">PA8408101204080A</a>	PROF. ANG. 810mm- 4000°K -12w-cri80-	<b>4000</b>	8	24	1812	12	80
<a href="#">PA8408101206080A</a>	PROF. ANG. 810mm- 6000°K -12w-cri80-	<b>6000</b>	8	24	1872	12	80
<a href="#">PA8410102153080A</a>	PROF. ANG. 1010mm- 3000°K-21,5w-cri80-	<b>3000</b>	10	24	2988	21,5	80
<a href="#">PA8410102154080A</a>	PROF. ANG. 1010mm-4000°K-21,5w-cri80-	<b>4000</b>	10	24	3246	21,5	80
<a href="#">PA8410102156080A</a>	PROF. ANG. 1010mm-6000°K-21,5w-cri80-	<b>6000</b>	10	24	3354	21,5	80
<a href="#">PA8410101553080A</a>	PROF.ANG. 1010mm-3000°K-15,5w-cri80-	<b>3000</b>	10	24	2154	15,5	80
<a href="#">PA8410101554080A</a>	PROF. ANG. 1010mm-4000°K-15,5w-cri80-	<b>4000</b>	10	24	2340	15,5	80
<a href="#">PA84101015536080A</a>	PROF. ANG. 1010mm-6000°K-15,5w-cri80-	<b>6000</b>	10	24	2418	15,5	80
<a href="#">PA8412102603080A</a>	PROF. ANG. 1210mm-3000°K-26w-cri80-	<b>3000</b>	12	24	3614	26	80
<a href="#">PA8412102604080A</a>	PROF. ANG. 1210mm- 4000°K-26w-cri80-	<b>4000</b>	12	24	3926	26	80
<a href="#">PA8412102606080A</a>	PROF. ANG. 1210mm- 6000°K -26w-cri80-	<b>6000</b>	12	24	4056	26	80
<a href="#">PA8412101803080A</a>	PROF. ANG. 1210mm-3000°K-18w-cri80-	<b>3000</b>	12	24	2502	18	80
<a href="#">PA8412101804080A</a>	PROF.ANG. 1210mm-4000°K -18w- cri80-	<b>4000</b>	12	24	2718	18	80
<a href="#">PA8412101806080A</a>	PROF.ANG. 1210mm- 6000°K-18w-cri80-	<b>6000</b>	12	24	2808	18	80
<a href="#">PA8415103303080A</a>	PROF. ANG. 1510mm-3000°K-33w-cri80-	<b>3000</b>	15	24	4587	33	80
<a href="#">PA8415103304080A</a>	PROF. ANG. 1510mm-4000°K-33w-cri80-	<b>4000</b>	15	24	4983	33	80
<a href="#">PA8415103306080A</a>	PROF. ANG. 1510mm-6000°K-33w-cri80-	<b>6000</b>	15	24	5148	33	80
<a href="#">PA8416102003080A</a>	PROF.ANG. 1510 mm-3000°K -22,5w-cri80-	<b>3000</b>	15	24	3127	22,5	80
<a href="#">PA8416102004080A</a>	PROF.ANG. 1510mm-4000°K -22,5w-cri80-	<b>4000</b>	15	24	3397	22,5	80
<a href="#">PA8416102006080A</a>	PROF.ANG. 1510mm-6000°K -22,5w-cri80-	<b>6000</b>	15	24	3510	22,5	80

## DATI TECNICI TECHNICAL DATA

codice articolo code	descrizione description	colore color	n. moduli n. forms	Volt	flusso Lm	Power W	CRI
<a href="#">PA8418103873080A</a>	PROF. ANG. 1810mm-3000°K-39w-cri80-	3000	18	24	4950	39	80
<a href="#">PA8418103874080A</a>	PROF. ANG. 1810mm-4000°K-39w-cri80-	4000	18	24	5400	39	80
<a href="#">PA8418103876080A</a>	PROF. ANG. 1810mm-6000°K-39w-cri80-	6000	18	24	5850	39	80
<a href="#">PA8418102703080A</a>	PROF. ANG. 1810 mm-3000°K-27w-cri80-	3000	18	24	3150	27	80
<a href="#">PA8418102704080A</a>	PROF. ANG. 1810mm-4000°K-27w-cri80-	4000	18	24	3420	27	80
<a href="#">PA8418102706080A</a>	PROF. ANG. 1810mm-6000°K-27w-cri80-	6000	18	24	3600	27	80

## CERTIFICAZIONI CERTIFICATIONS

[EN 62031:2008](#)

[EN 60598-1:2015](#)

[EIC/TR 62778:2014](#)



## ACCESSORI ACCESSORIES

